

SAILING INSTRUCTIONS

Including Notice to Competitors 1

DUTCH YOUTH REGATTA 2018

May 10 – 13, 2018

on the IJsselmeer off Workum

Open Dutch Championship for:

29er “Under-19” (born in 2000 or later), Cadet, Laser 4.7 Youth (born in 2001 or later), Laser Radial “Under-21” (born in 1998 or later), Laser Standard “Under 21” (born in 1998 or later), Optimist, Optimist Benjamin “under 12” (born in 2007 or later), Splash Blue

Class Championship for:

Nacra 15 “Under-19” (born in 2000 or later)

The Dutch Youth Regatta 2018 includes the 29er “Under-25” (born in 1994 or later) and RS-Feva “Under-25” (born in 1994 or later) Eurocup Series

And Laser Radial “Under-25” (born in 1994 or later), Laser Standard “Under 25” (born in 1994 or later), Nacra 15 “Under-25” (born in 1994 or later), RS:X 8.5 “Under-21” (born in 1998 or later) class event

The Organizing Authority is the Stichting Dutch Youth Regatta under the auspices of Royal Netherlands Watersport Association (RNWA)

[DP] denotes a rule for which the penalty is at the discretion of the Protest Committee

[NP] denotes a rule that shall not be grounds for protests by a boat. This changes RRS 60.1(a).

1 RULES

- 1.1 The regatta will be governed by the rules as defined in *The Racing Rules of Sailing* (RRS).
- 1.2 The prescriptions of the RNWA will apply. See <http://www.sailing.org/41717.php>
- 1.3 The “*Rules for Championships Sailing, Windsurfing and Kiteboarding*” of the RNWA will apply.
- 1.4 Sails shall carry the full sail number and national letters in accordance with the Class Rules, the RRS and comply with RRS Appendix G. With the permission of the Race Committee a boat chartered or loaned for the event may carry a sail number in contravention of her class rules, provided that this number shall not be the sail number of any other boat competing in the same class. This number shall be declared at the time of entry. This changes RRS G3.
- 1.5 If there is a conflict between languages the English text will take precedence.
- 1.6 Every person on board who has its domicile in the Netherlands shall have the appropriate license. The licenses will be checked at registration.
- 1.7 RRS Appendix T applies, as changed in SI 16.

2 NOTICES TO COMPETITORS

Notices to competitors will be posted on the official Notice Board located in or near the regatta office.


3 CHANGES TO SAILING INSTRUCTIONS


Any change to the sailing instructions will be posted before 08.00 on the day it will take effect, except that any change to the schedule of races will be posted by 20.00 on the day before it will take effect.

4 SIGNALS MADE ASHORE

Signals made ashore will be displayed at one of the official signal masts, located close to the regatta office.

Signal: **Meaning:**

Flag "AP"  All races not started are postponed; do not leave the harbour area.
When flag AP is displayed ashore, '1 minute' is replaced by 'not less than 60 minutes' for Course Area A, B and C, for Course Area D not less than 30 minutes in the text under AP in RRS – Race Signals.
Flag AP with a Course Area flag (black A, B, C or D on a white background) means that this signal applies only to that course area.

Flag "D"  Boats shall proceed to their racing area, the warning signal will be made not less than 60 minutes after the display of this flag, for Course Area A, B and C for Course Area D not less than 30 minutes.

[DP] [NP] Boats shall not launch before this flag has been displayed.

When a visual signal is displayed over a course area flag (black A, B, C or D on a white background), the signal applies only to that course area.

In addition to the class flags as defined in SI 6.1, the following class flags will be applicable: (if the class sail in different groups)

Class	Class flag
All 29er Groups	Flag with 29er sign
All Splash Blue Groups	Flag with Splash Blue sign
All Optimist Benjamin Groups	Flag "O"

5 SCHEDULE OF RACES

5.1 Starting sequence:

Course Area A	Optimist Group 1 Optimist Group 2 Optimist Group 3 Optimist Group 4 Optimist Group 5
Course Area B	RS Feva Optimist Benjamin Group 1 Optimist Benjamin Group 2 Cadet
Course Area C	Laser Standard Laser Radial Laser 4.7 Splash Blue Group 1 Splash Blue Group 2
Course Area D	RS:X 8.5 Nacra 15 29er Group 1

	29er Group 2 RS:X-8.5
--	--------------------------

After the first race of a day, the race committee may change the starting sequence. The start of two or more classes can be combined. In case of combining classes, the class flags will be displayed simultaneously.

Note: The combined classes may have to sail different courses.

5.2 The schedule of races is as follows:

Date	Number of Scheduled Races	
	All Classes except 29er, Nacra 15 and RS:X-8.5	29er, Nacra 15 and RS:X-8.5
Thursday, 10 May 2018	3	4
Friday, 11 May 2018	4	5
Saturday, 12 May 2018	4	5
Sunday, 13 May 2018	3	4

5.3 The warning signal for the first race of the first class on each course is:

Date	The warning signal for the first race of the first class			
	Course Area A	Course Area B	Course Area C	Course Area D
Thursday, 10 May 2018	12:55	12:55	12:55	12:55
Friday, 11 May 2018	9:55	10:55	10:55	10:55
Saturday, 12 May 2018	9:55	10:55	10:55	10:55
Sunday, 13 May 2018	9:55	10:55	10:55	10:55

5.4 On Sunday no warning signal will be made after 15.00 hrs.

(for 29er, Nacra 15 and RS:X 8.5 15.30 hrs.)

5.5 Each racing day may be used to start postponed or to re-start abandoned races under the restriction that no more than five (5) races will be sailed per day, six (6) races for Course Area D.

5.6 One extra race per day may be sailed provided that the regatta will not be more than one race ahead of schedule.

5.7 29er "Under-25" and 29er "Under-19", Laser Radial "Under-25" and Laser Radial "Under-21", Laser Standard "Under-25" and Laser Standard "Under-21", Nacra 15 "Under-25" and Nacra 15 "Under-19" will be combined in one fleet.

5.8 **The Optimist fleet** will be divided in starting groups of maximum 80 boats. The starting groups will sail a qualifying series on the first two (2) days of the event followed by a final series on the third (3rd) and fourth (4th) day. If after the first two qualifying days fewer than five (5) races are completed more qualifying races will be sailed on the third day. If after the third day fewer than five (5) races have been completed, there will be no final series races.

5.9 For the **Splash Blue and/or 29er and/ or Optimist Benjamin fleets**, the regatta may consist of a qualifying series and a final series if it is decided to split the fleet in two starting groups based on the number of registered boats. The following format will apply:

For the Splash Blue and/or 29er and/ or Optimist Benjamin fleets, the starting groups will sail a qualifying series on the first two (2) days of the event followed by a final series on the third (3rd) and fourth (4th) day. If during the qualifying series fewer than five (5) races have been completed, more qualifying races will be sailed on the third day. If after the third day fewer than five (5) races have been completed, there will be no final series races.

- 5.10
- Initial assignments for the races will be made on a random basis by the OA. Those assignments will be posted no later than 10:30 hrs. on Thursday 10 May 2018
 - For Friday 11 May 2018, boats will be reassigned to starting groups, except if on the first day only one race is completed. If all starting groups have completed the same number of races, boats will be reassigned on the basis of their ranks in the series. If not all starting groups have completed the same number of races the series scores for reassignment will be calculated for those races completed by all starting groups.
 - Reassignments will be made on a 1,2,3,4,5,5,4,3,2,1,1,2,3,4,5 etc. basis into different colour groups.
 - Assignments will be based on the ranking available at 21:00 hrs. that day regardless of protests or requests for redress not yet decided. Assignments or reassignments will be no grounds for redress. This changes RRS 62.1(a).
 - When the last race of the day is not valid for all starting groups, the race shall be abandoned for all concerned starting groups (this changes RRS 32.1).
 - Races not sailed by all groups will not count for the final results
- 5.11 Boats will be assigned to final series starting groups on the basis of their ranks in the qualifying series. The final series starting groups will be, as nearly as possible, of equal size but so that the Silver group is not larger than the Gold group and so on. Boats with the best qualifying series ranks will race all final series races in Gold, boats with the next best qualifying series ranks will race in Silver, and etc. for Bronze, Emerald, Ivory.
- 5.12 Different final series groups need not have completed the same number of final races.

6 CLASS FLAGS, RIBBONS AND BIBS

- 6.1 For the other classes the class flags will be:

Class	Class Flag
29er Group 1 (Gold)	Yellow Flag with DHPS logo
29er Group 2 (Silver)	Blue Flag with DHPS logo
Cadet	Flag "G"
Laser 4.7	Flag "J"
Laser Radial	Flag "W"
Laser Standard	Flag "K"
Nacra 15	White Flag with DHPS logo
Optimist Group 1 (Gold)	Flag YELLOW
Optimist Group 2 (Silver)	Flag BLUE
Optimist Group 3 (Bronze)	Flag RED
Optimist Group 4 (Emerald)	Flag GREEN
Optimist Group 5 (Ivory)	Flag WHITE
Optimist Benjamin Group 1 (Gold)	Flag YELLOW
Optimist Benjamin Group 2 (Silver)	Flag BLUE
RS-Feva	Flag "F"
RS:X 8.5	Blue Flag with DHPS logo
Splash Blue Group 1 (Gold)	Flag YELLOW
Splash Blue Group 2 (Silver)	Flag RED

- 6.2 **[DP] [NP]** All boats in the split fleets, shall display a colored ribbon (corresponding with the color of their class flag).
 For the Optimist and Optimist Benjamin fleet this ribbon shall be attached to the top of the sprit.
 For the 29er and/ or Splash Blue this ribbon shall be attached to the top of the mainsail.
 The OA will provide the ribbons.
- 6.3 **[SP]** Each day, the first, second and third boats in the series ranking at the beginning of the day shall wear yellow, blue and red bibs, respectively, on top of any clothing or buoyancy aid, visible while racing. The bibs will be provided by the Organizing Authority (OA).

7 RACING AREAS

- 7.1 Appendix 1 shows the location of racing areas and the identification of the race committee signal vessel of each racing area
- 7.2 The starting area for each course is defined as a rectangle covering the area 100 meters to both windward and leeward of the starting line and 50 meters to both port and starboard of either end of the starting line .

8 THE COURSES

- 8.1 The diagrams in Appendix 2 show the courses, including the approximate angles between legs, the order in which marks are to be passed, and the side on which each mark is to be left.
- 8.2 No later than the warning signal, the race committee signal vessel will display the approximate compass bearing of the first leg.
- 8.3 For the Optimist classes the course will not be shortened. This changes RRS 32.

9 MARKS

- 9.1 The colour and shape of the marks of the racing areas A, B, C and D will be shown in Appendix 2.
- 9.2 For Course Area B, C and D, marks 3, 4 and 6 can be replaced by a gate. Both marks of the gate shall have shape and colour as described in Appendix 2 for the original mark.

10 THE START

- 10.1 Races will be started by using RRS 26.
- 10.2 On course areas A, B and C the starting line will be between staffs displaying orange flags on the starting marks, or between a pole or mast displaying an orange flag aboard of the race committee signal vessel at the starboard end and a dan buoy displaying an orange flag at the port end of the starting line. A Mark ILM may be used. If a mark ILM is used, the following will apply: boats shall keep the mark ILM to starboard while starting. Mark ILM is also a mark of the starting line as meant in RRS part 2, section C, the introduction.
 On course area D the starting line will be between a pole or mast displaying an orange flag aboard of the race committee signal vessel at the starboard end and a dan buoy displaying an orange flag at the port end of the starting line.
- 10.3 **[NP][DP]** Boats whose warning signal has not been made shall avoid the starting area
- 10.4 A boat starting later than four(4) minutes after her starting signal will be scored DNS without a hearing. This changes RRS A4.1 and A5.
- 10.5 To alert boats that a race or sequence of races will start soon, the orange starting line flag(s) will be displayed (with one sound signal) at least five minutes before a warning signal is made.

- 10.6 If a start under RRS 30.3 should result in a General Recall, sail numbers of the boats identified breaking the black flag rule will be displayed on the race committee signal vessel at starboard end or a committee vessel near the signal vessel.

11 CHANGE OF THE NEXT LEG OF THE COURSE

- 11.1. To change the next leg of the course, the race committee will bring the original mark (or the finishing line) to a new position.
- 11.2. Except at a gate, boats shall pass between the race committee vessel signaling the change of the next leg and the nearby mark, leaving the mark to port and the race committee vessel to starboard. This changes RRS 28.

12 THE FINISH

The finishing line will be between staffs displaying orange flags on the finishing marks.

13 PENALTY SYSTEM

- 13.1 Appendix P of the RRS will apply. Add the following sentence to RRS P2.1: When penalized after she has finished, she will be given a scoring penalty of 30% calculated as stated in RRS 44.3(c), but not more than 8 points and not less than 4 points, without a hearing.

Appendix P is changed as follows:

- P2.2. 'second' is changed to 'second and following'. P2.3 is deleted.
- 13.2. If flag O or R is displayed in combination with one or more class flags, the signal applies only to those classes.
- 13.3 The World Sailing 'Interpretations of Rule 42, Propulsion' are the reference for the Protest Committee to apply RRS 42. See <http://sailing.org/tools/documents/InterpretationsR42May2017AW-%5B23702%5D.pdf>
- 13.4 For the 29er), Nacra 15 and RS Feva class: RRS 44.1 and Appendix P2.1 are changed so that the Two-Turn Penalty is replaced by a One-Turn Penalty.

14 TIME LIMITS AND TARGET TIMES

- 14.1 Time limits and target times for all classes are as follows:

	Course Area D	All other course areas
Time Limit	60 minutes	75 minutes
Mark 1 time limit	15 minutes	20 minutes
Target time	30 minutes	45 minutes

If no boat has passed Mark 1 within the Mark 1 time limit the race will be abandoned.

- 14.2 Boats failing to finish within 15 minutes after the first boat in her class sails the course and finishes will be scored Did Not Finish without a hearing. This changes RRS 35, A4 and A5.
- 14.3 Failure to meet the target time will not be grounds for redress. This changes RRS 62.1(a).

15 PROTESTS AND REQUESTS FOR REDRESS

- 15.1 Protest forms are available at the regatta office. Protests and requests for redress or reopening shall be delivered there within the appropriate time limit.
- 15.2 For each class **or group**, the protest time limit is 75 minutes after the last boat has finished the last race of the day. The same protest time limit applies to all protests by the race committee, technical committee and Protest Committee and to requests for redress. This changes RRS 61.3 and 62.2.
- 15.3 Notices will be posted no later than 30 minutes after the protest time limit to inform competitors of hearings in which they are parties or named as witnesses. Hearings will be held in the protest room, located at the regatta office, as soon as possible after receipt of the protest form.
- 15.4 Notices of protests by the race committee, technical committee or Protest Committee will be posted to inform boats under RRS 61.1(b).
- 15.5 A list of boats that, under the rules of Appendix P, have acknowledged breaking RRS 42 or have been disqualified by the Protest Committee will be posted as soon as possible.
- 15.6 On the last day of a qualifying series or the last scheduled day of racing a request for redress from a Protest Committee decision shall be delivered no later than 30 minutes after the decision was posted. This changes RRS 62.2.
- 15.7 A request for a decision in writing shall be delivered to the Protest Committee desk within one hour after the decision is given verbally. This changes RRS 65.2.
- 15.8 On the last day of a qualifying series or the last scheduled day of racing a scoring inquiry as per SI 18.7 shall be delivered to the Regatta Office within the protest time limit or within 60 minutes after posting of the results, whichever is later. When the request is not granted, the protest time limit is 60 minutes after the race committee's decision is posted. This changes RRS 62.2.
- 15.9 An Protest Committee is appointed. Decisions are final as provided in RRS 70.5.

16 ARBITRATION

- 16.1 All protests involving only 2 boats and a rule of RRS part 2 or RRS 31, will be subject to arbitration. RRS Appendix T applies.
- 16.2 The 30% scoring penalty will not exceed 15 points. This changes RRS T1(b).
- 16.3 The arbitrator can be a member of the Protest Committee that hears the protest. This changes RRS 63.3(a) and Appendix T.

17 SCORING

- 17.1 A total of four (4) races are required to be completed to constitute a championship. (for the 29er Eurocup Series three (3) races are required to be completed to constitute a series)
- 17.2 When less than five races have been completed, a boat's series score will be the total of her race scores, this changes RRS Appendix A2.
- 17.3 When from five to nine races have been completed one race score will be excluded.
- 17.4 When ten or more races have been completed two races scores will be excluded.

- 17.5 When a qualifying/ final series is sailed:
- The qualifying series races and the final series races will count for total points in the championship.
 - One qualifying series race score will be excluded when calculating the division into final series fleets.
 - If only one final series race is completed it will not be excluded.
 - If two or more final series races are completed then a maximum of one final series race score may be excluded.
 - For the purposes of rule A4.2 “Scoring” the number of boats entered into a qualifying/ final series race will be the number of boats assigned to the largest qualifying fleet.
- 17.6 For combined fleets only the 29er “Under-19”, Laser Radial “Under-21”, Laser Standard “Under-21” and Nacra 15 “Under-19” class will qualify for the title “Dutch Champion”.

18 [NP][DP] SAFETY REGULATIONS

- 18.1 RRS 40 shall apply at all times while afloat. Flag Y will not be displayed. This changes RRS 40 and the Preamble of Part 4.
- 18.3 Any boat that retires from a race, or does not start a race shall inform the race committee on the water if possible and shall in all cases inform the regatta office as soon as possible.
- 18.4 Competitors who require assistance should so signify by blowing a whistle or waving the paddle or one arm. The race committee reserves the right to assist competitors who, in the opinion of the race committee, require assistance, regardless of the wishes of the competitor.
- 18.5 When flag V is displayed on a race committee vessel, all coaches and support boats are permitted to enter the racing area and shall cooperate with the race committee in rescue assistance.
- 18.6 For Nacra 15 only: If the race committee signal vessel displays code flag Y all competitors shall wear a helmet (EN1385 standard) while racing. This changes RRS Race Signals.
- 18.7 Each competitor shall check out each day before leaving the harbour. After returning each competitor shall check in before parking his/her boat in the designated area. See also the separate instruction in appendix 3.**

19 REPLACEMENT OF CREW OR EQUIPMENT

- 19.1 [NP][DP] Substitution of competitors will not be allowed without prior written approval of the race committee. The responsible person cannot be substituted.
- 19.2 In the event of damage, boats and equipment may only be substituted with the written permission of the race committee. If the damage occurs later than 90 minutes before the first scheduled start on a racing day and before the start of the last race of the day, provisional verbal permission shall be obtained from the Protest Committee or the race committee and the written permission of the Protest Committee shall be applied for before the end of the protest time limit at the end of the day in which the substitution takes place.
- 19.3 Nacra 15 competitors, shall use only one set of hulls, set of sails, mast, boom, one set of centerboards and one set of rudders

20 EQUIPMENT AND MEASUREMENT CHECKS

- 20.1 Upon arrival competitors shall report to the regatta office with a valid measurement certificate, if applicable, for a check on registration and class rules. Other equipment may also be checked.
- 20.2 Apart from the stipulations in SI 1.4, the race committee may permit under exceptional circumstances and only upon a written request, a boat to use a sail number other than required by RRS 77 and RRS G.
- 20.3 All competitors, except Nacra 15, shall use only one hull, (set of) sail(s), mast, boom, sprit (Optimist only), centerboard, rudder, which may be identified during measurement.
- 20.4 A boat or equipment may be inspected at any time for compliance with the class rules and sailing instructions. On the water, a boat can be instructed by a member of the race committee or the technical committee proceed immediately to a designated area for inspection.

21 [NP][DP] HARBOUR MASTERS

The instructions of the harbour masters, beach masters and site managers must be followed strictly.

22 OFFICIAL BOATS

Official boats will be marked as follows:

- a) Race committee vessels will fly a flag with "RC".
- b) Jury vessels will fly a yellow flag marked "JURY".
- c) Dutch Youth Regatta Race management vessels will fly a flag with "DYR LOGO".
- d) Rescue vessels will fly a purple flag marked "RESCUE".
- e) Press vessels will fly a white flag marked "PRESS"

23 [NP][DP] SUPPORT BOATS

- 23.1 During the races there shall be no communication between competitors and support persons. After the first warning signal team support and private boats shall stay well clear of the starting, racing and finishing area until the last boat has finished.
- 23.2 No coach and support boats are permitted in the racing, starting and finishing area from the first warning signal of the first fleet in a race until all boats have finished or the race committee signals a postponement, general recall or abandonment for all races.
- 23.3 Coach and support boats shall stay at least 100 m away from any boat racing.
- 23.4 During racing of any fleet, coach and support boats are not allowed inside the area as indicated by the dotted line shown in Appendix 2.
- 23.5 Coach and support boats shall register at the regatta office before the first race and shall conspicuously display their number during the races.
- 23.6 A coach meeting is scheduled on 10 May 2018 9:00 in the restaurant and the other racing days at 8.00 hrs. in the event tent.

24 [NP][DP] TRASH DISPOSAL

Trash may be placed aboard support and race committee boats.

25 [DP] [NP] BERTHING

Boats shall be kept in their assigned area in the boat park while ashore

26 [DP] [NP] RADIO COMMUNICATION

Except in an emergency a boat that is racing shall not make voice or data transmissions and shall not receive voice or data communications that is not available to all boats. The VHF 72 shall only be used for safety communication.

27 PRIZES

Helmsman and crew of the winning boat of the championship acquire the title "Dutch Champion" and receive the Blue Pennant and the accompanying medal(s) of the RNWA, except the RS-Feva class. Helmsman and crew of the boats that are placed second and third acquire also medal(s) of the RNWA, except the RS-Feva class.

Nacra 15 "Under-19". Helmsman and crew of the winning boat of the championship acquire the title "Class Champion". The responsible person of the winning boat acquires the Red Pennant of the RNWA. Helmsman and crew of the boats that are placed second and third acquire also medal(s) of the RNWA

In addition to the above, a number of special prizes may be awarded.

28 DISCLAIMER OF LIABILITY

Participants participate in the regatta entirely at their own risk. See RRS 4, Decision to Race. The RNWA, the OA, the race committee, the Protest Committee, or any other party involved in the organization of the Regatta will not accept any liability for material damage or personal injury or death sustained in conjunction with or prior to, during or after the regatta.

29 RIGHTS TO USE NAME AND LIKENESS

By entering the event competitors accept that they may be photographed and/or videotaped participating in a race and/or using the Dutch Youth Regatta facilities and they consent to the taking of such images and to the use, reuse, publication and republication of such images in any media, in conjunction with the competitors name or not, without compensation and without the competitors approval of such images or any use thereof. Video cameras can also be put on boats.

30 INSURANCE

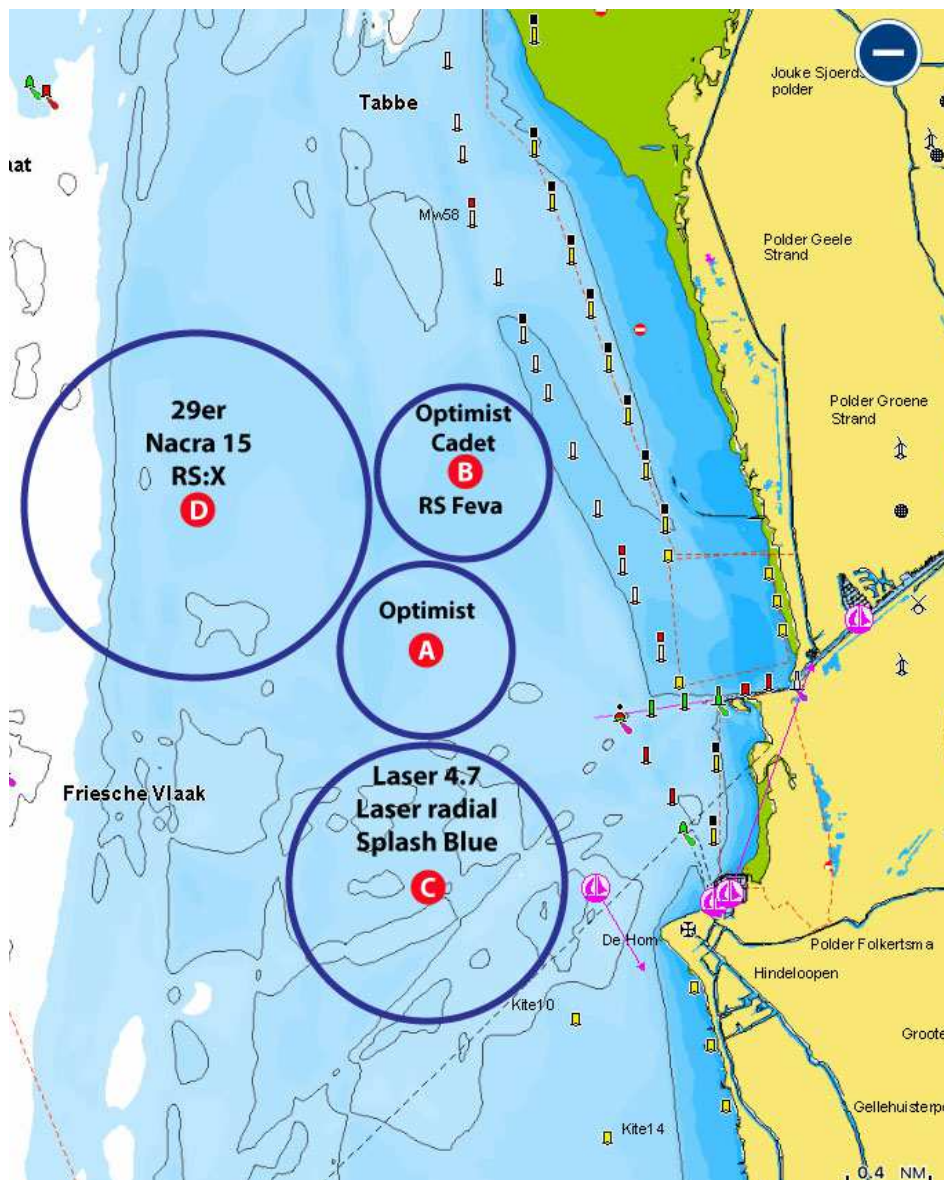
Each participating boat shall be insured with valid third-party liability insurance with a minimum cover of €1.500.000,00 per incident or the equivalent.

31 ORGANISATION

The Principal Race Officer (PRO):	Ernst Jan den Dekker
Race Officer Racing Area A:	John Borsboom
Race Officer Racing Area B:	Bas Mientjes
Race Officer Racing Area C:	Remco de Goederen
Race Officer Racing Area D:	Alex Hoeve
The Chairman of the Jury:	Timo Haß

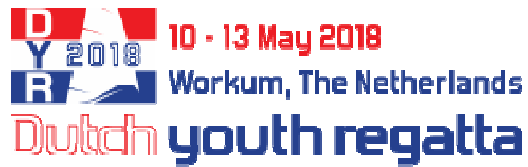
Appendix 1 location of racing areas and the identification of the race committee signal vessel

Course Area	Approx. position of centre of the Area	Approx. distance to centre of the Area from W2	Approx. course to centre of the Area from W2
A	52° 57.85' N 005° 21.75' E	1.50 NM	280°
B	52° 58.75' N 005° 22.18' E	1.60 NM	320°
C	52° 56.62' N 005° 22.18' E	1.50 NM	235°
D	52° 59.61' N 005° 21.00' E	2.80 NM	280°



Identification of the race committee signal vessel:

Club flag Course Area A:	KZ&RV Hollandia (Blue with red and gold lion) and a white flag with black A
Club flag Course Area B:	ZV Workum (Yellow and Blue) and a white flag with black B
Club flag Course Area C:	Holland Regatta Club (white with orange "HRC") and a white flag with black C
Club flag Course Area D:	Blue banner with Sailservice and a white flag with black D



Appendix 2 The Course and marks

Course Area A (KZ&RV Hollandia):

Mark 1, 2, and 3 are yellow cylindrical shaped buoys.

Course Area B (ZV Workum):

Mark 1, 2, 3 and 4 are orange cylindrical shaped buoys with text "Rabobank".

Course Area C (Holland Regatta Club):

Mark 1, 2, 3 and 4 are orange cylindrical shaped buoys. Marks 5 and 6 are green cylindrical shaped buoys.

Course Area D (Sailservice):

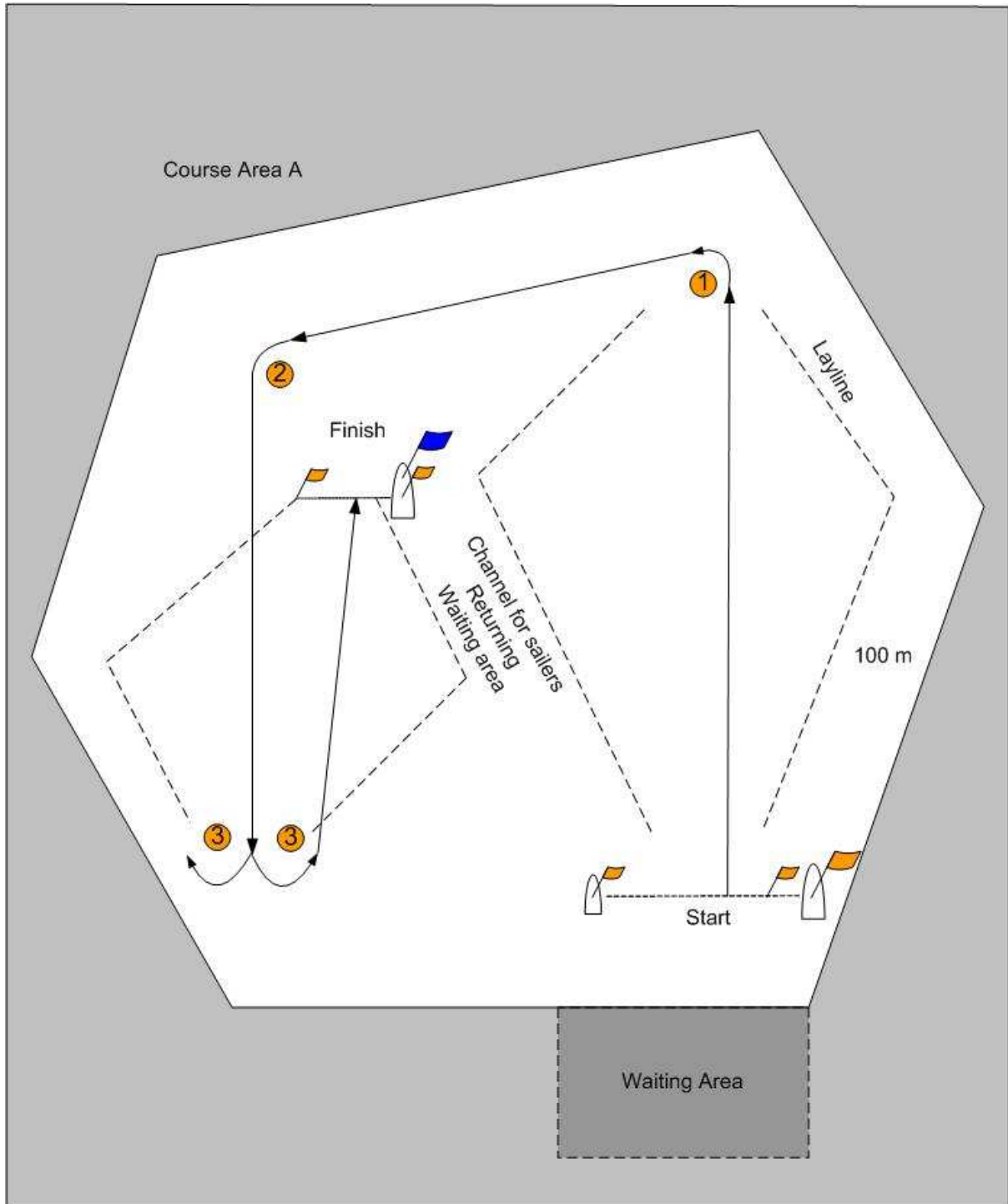
Marks 1 is a yellow cylindrical buoy, 1A is a small yellow cylindrical buoy.

Mark 2 is an orange cylindrical buoy.

Marks 3A and 3B are green cylindrical buoys.

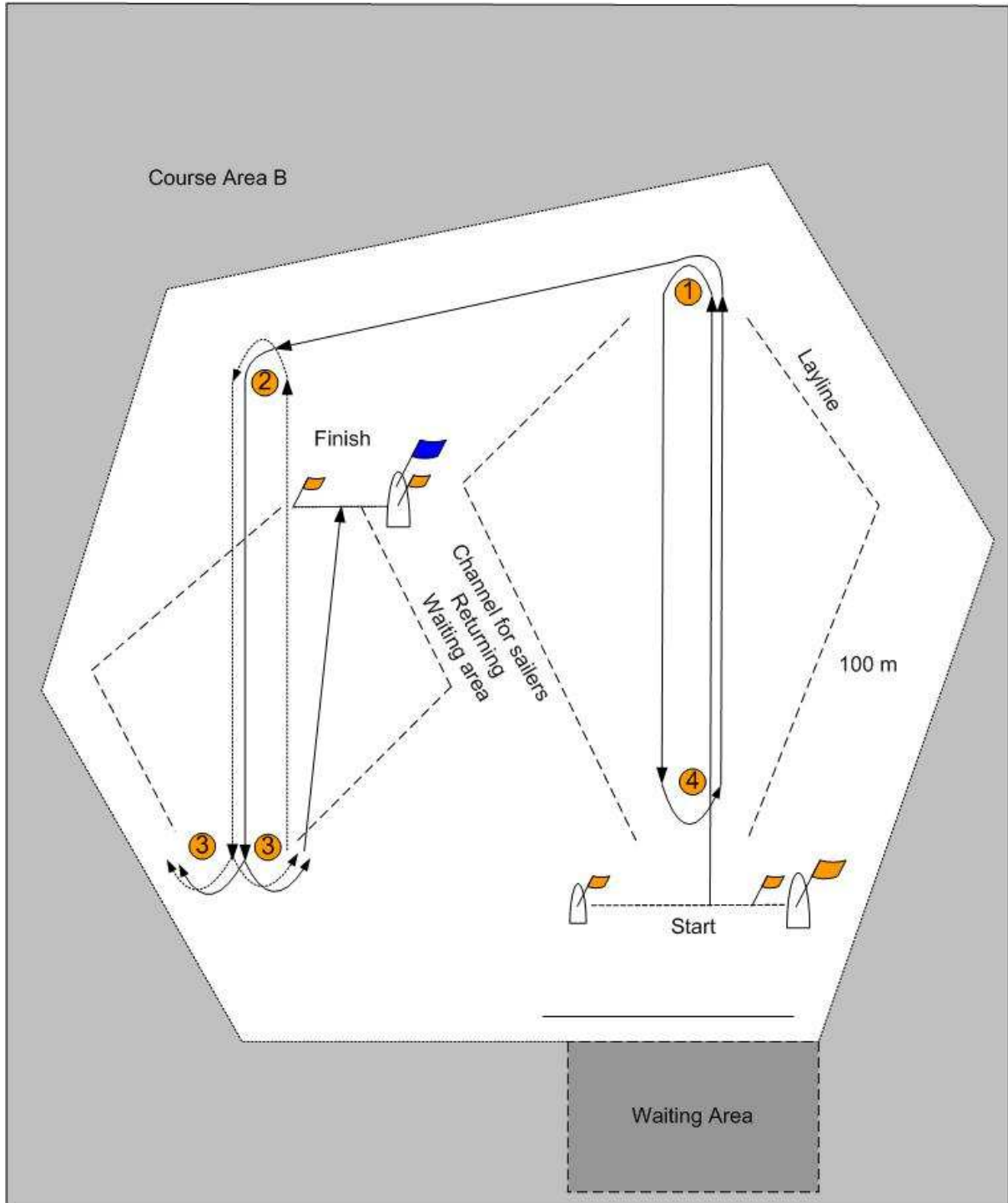
Course diagram – Course Area A

Classes	Sequence of marks
Optimist Group 1, 2, 3, 4 and 5	Start – 1 – 2 – 3 (gate) – Finish



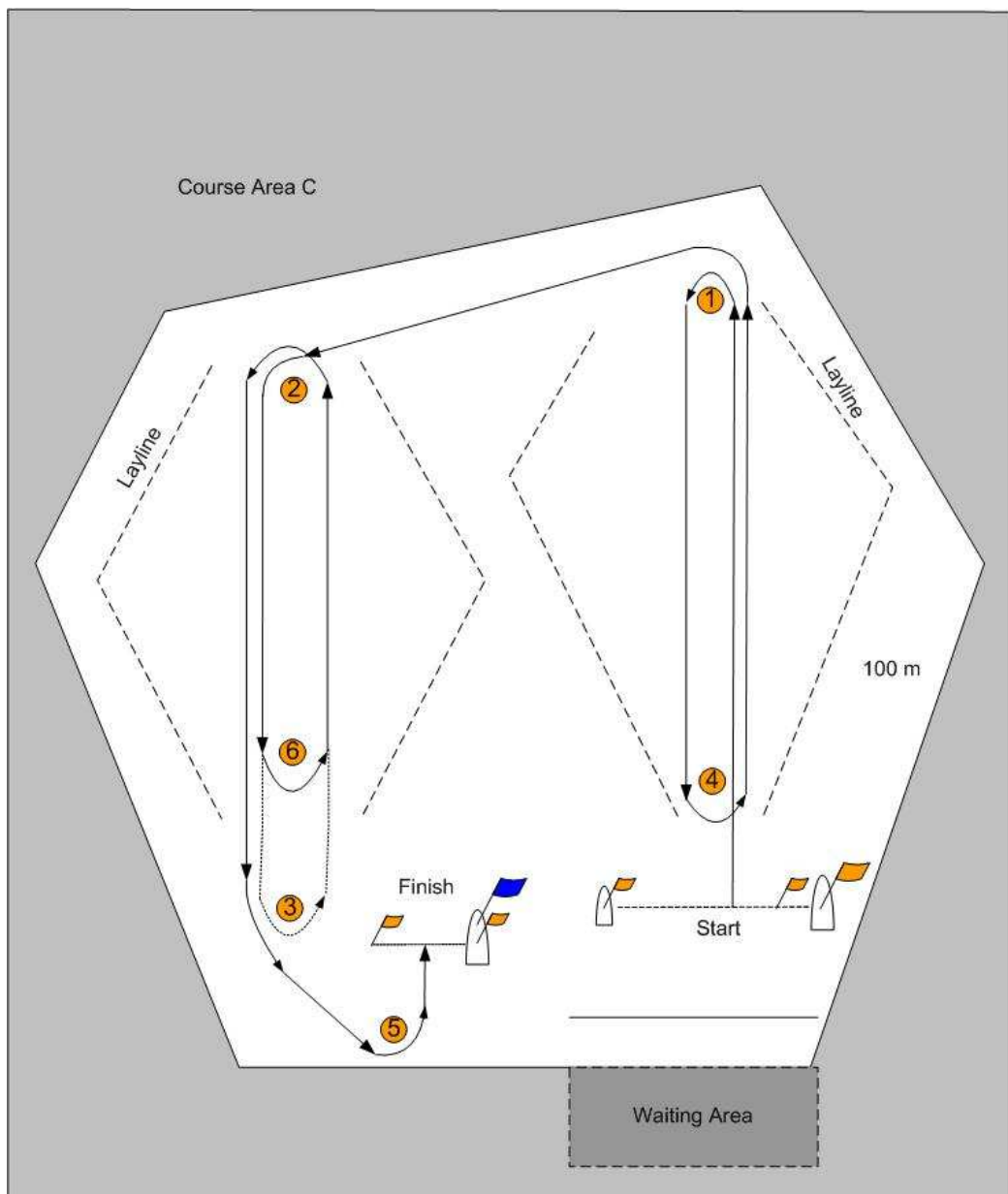
Course diagram – Course Area B

<i>Classes</i>	<i>Sequence of marks</i>
RS Feva	Start – 1 – 2 – 3 (gate) – 2 – 3 (gate) – finish
Optimist Benjamin Group 1 and 2	Start – 1 – 2 – 3 (gate) – Finish
Cadet	Start – 1 – 4 – 1 – 2 – 3 (gate) – Finish



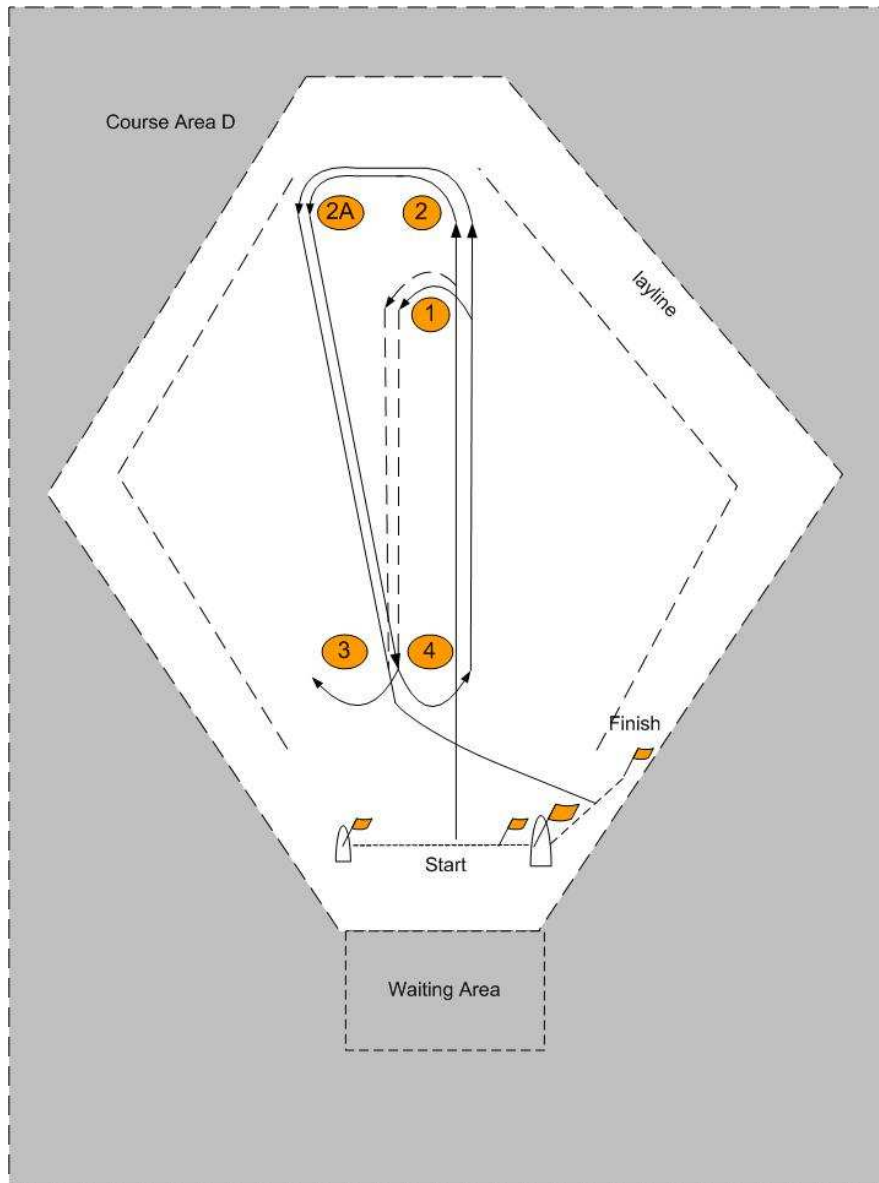
Course diagram – Course Area C

Classes	Sequence of marks
Laser Standard	1 – 2 – 3 – 2 – 3 – 5 – Finish
Laser Radial	1 – 2 – 3 – 2 – 3 – 5 – Finish
Laser 4.7	1 – 2 – 6 – 2 – 3 – 5 – Finish
Splash Blue group 1 and 2	Start – 1 – 4 – 1 – 2 – 3 – 5 – Finish



Course diagram- Course Area D

Classes	Sequence of marks
RS:X 8.5	Start – 2 – 2A – 3, 4 (gate) – 1 – 1A – 4 – Finish
Nacra 15	Start – 2 – 2A – 3, 4 (gate) – 2 – 2A – 4 – Finish
29er group 1 and 2	Start – 1 – 3, 4 (gate) – 1 – 4 – Finish



Appendix 3 Check in Check out instruction

All competitors will receive a personal RFID wristband at the registration. The RFID-chip in the wristband is corresponding with the competitors personal details in the Dutch Youth Regatta entry system. Therefore the wristband is strictly personal and may not be exchanged with other sailors. Competitors must wear their wristband while on the water.

Each competitor shall check-out at the beach-master, each day before leaving the harbour. After returning each competitor shall check-in at the beach-master before parking his/her boat or board in the designated area.

Competitors who leave the race area early shall immediately check-in at the Regatta Office after arriving in the harbour.

In addition to RRS 60 any participant who fails to give this Identification Badge to the Beach Master before leaving to the Racing Area will be scored “**DNC**” for the races of that day and any participant who fails to collect back his Identification Badge at the slipway immediately after the races will be scored “**DSQ**” for the races of that day.

Competitors who lose their RFID wristband must buy a new wristband at the Regatta Office. The cost for a new wristband will be EUR 10,-